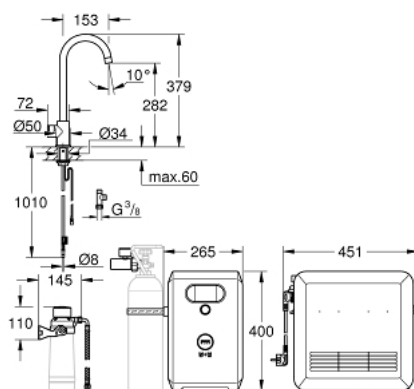


31 302 DC2 GROHE BLUE PROFESSIONAL C-SPOUT KIT WITH MONO FAUCET



OPIS PROIZVODA (1/2)

- Colour: supersteel
- sastoji se od:
 - GROHE Blue Mono slavina s filterom
 - instalacija na 1 otvor
 - izljev u obliku slova C
 - tipka za 3 vrste filtrirane i ohlađene vode
 - negazirana, srednje gazirana, jako gazirana voda
- GROHE Long-Life premaz
- cjevasti izljev
- područje zakretanja 150°
- GROHE Blue Professional hladnjak
- isporučuje 12 litara ohlađene gazirane vode po satu
- zaslon u boji s pritiski i okreni kontrolom
- jedinica za hlađenje 270 W, 230 V, 50 Hz
- razina zvuka u stanju mirovanja 46 dB (A)
- vrsta zaštite IP 21
- odobrenje CE
- zahtjeva ventilacijske otvore na dnu kuhinjskog elementa
- postavljanje softvera i nadzor filtera i kapaciteta CO₂ moguće putem GROHE Watersystems app
- šalje obavijesti kada je filter pri kraju odnosno kada je nizak kapacitet CO₂
- moguće dodatno praćenje putem GROHE Blue Professional Preglednik-Monitor
- s Bluetooth® 4.0* i WIFI sučelje za bežičnu podatkovnu komunikaciju
- za Apple** i Android uređaje

31 302 DC2 GROHE BLUE PROFESSIONAL C-SPOUT KIT WITH MONO FAUCET

OPIS PROIZVODA (2/2)

- Bluetooth raspon (10 m) ovisi o materijalu i debljini zidova između odašiljača i prijemnika
- cleaning cartridge adapter, for use with GROHE Blue cleaning cartridge 40 434 001
- CO₂ pressure indicator
- filter glave s fleksibilnom prilagodbom tvrdoće vode
- GROHE Blue filter, boca CO₂ i kartuša za čišćenje nisu uključene u dostavu i trebale bi se naručiti zasebno
- prikladni filtri:- filter S-veličine, kapaciteta 600 l na 20° dKH (40 404 001)- filter M-veličine, kapaciteta 1500 l na 20° dKH (40 430 001)- filter L-veličine, kapaciteta 2500 l na 20° dKH (40 412 001)- filter s aktivnim ugljenom, kapaciteta 3000 l (40 547 001)- Magnezij + Cink filter, kapaciteta 400 l na 17° dGH (40 691 002)
- System requirements Apple iPhone with iOS 14.0 or higher System requirements Android smart phone with Android 10.0 or higher Mobile devices and GROHE Watersystems App*** are not included in delivery and have to be ordered separately via an authorised Apple store/store/iTunes or Google Play store.* The Bluetooth word mark and logos are registered trademarks owned by Bluetooth SIG, Inc. and any use of such marks by Grohe AG is under license. Other trademarks and trade names are those of their respective owners.** Apple, the Apple logo, iPod, iPod Touch, iPhone and iTunes are trademarks of Apple Inc., registered in the U.S. and other countries. Apple is not responsible for the function of this device or its compliance with safety and regulatory standards.*** Available for free via iTunes app or Google Play store.

