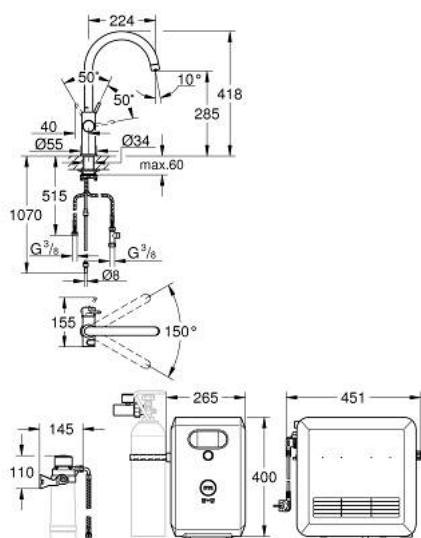


OPIS PROIZVODA (1/2)

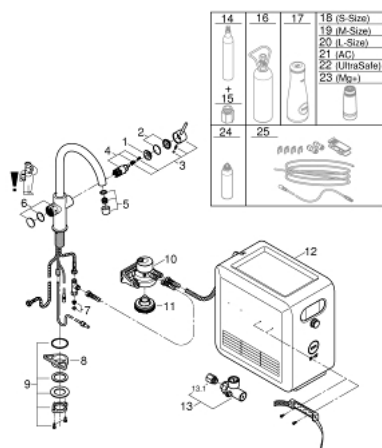
- Colour: supersteel
- sastoji se od:
- GROHE Blue jednoručna miješalica za sudoper s filterom
- instalacija na 1 otvor
- izljev u obliku slova C
- tipka za 3 vrste filtrirane i ohlađene vode
- negazirana, srednje gazirana, jako gazirana voda
- GROHE Long-Life premaz
- GROHE SilkMove keramička kartuša 28 mm
- cjevasti izljev
- područje zakretanja 150°
- odvojene unutrašnje cijevi za filtriranu i vodu vodnu vodu
- fleksibilne spojne cijevi
- GROHE Blue Professional hladnjak
- isporučuje 12 litara ohlađene gazirane vode po satu
- zaslon u boji s pritiskom i okreni kontrolom
- jedinica za hlađenje 270 W, 230 V, 50 Hz
- razina zvuka u stanju mirovanja 46 dB (A)
- vrsta zaštite IP 21
- odobrenje CE
- zahtjeva ventilacijske otvore na dnu kuhinjskog elementa
- postavljanje softvera i nadzor filtera i kapaciteta CO₂ moguće putem GROHE Watersystems app
- šalje obavijesti kada je filter pri kraju odnosno kada je nizak kapacitet CO₂
- s Bluetooth® 4.0* i WIFI sučelje za bežičnu podatkovnu komunikaciju

31 323 DC2 GROHE BLUE PROFESSIONAL C-SPOUT KIT

OPIS PROIZVODA (2/2)

- za Apple** i Android uređaje
- Bluetooth raspon (10 m) ovisi o materijalu i debljini zidova između odašiljača i prijemnika
- cleaning cartridge adapter, for use with GROHE Blue cleaning cartridge 40 434 001
- CO₂ pressure indicator
- filter glave s fleksibilnom prilagodbom tvrdoće vode
- GROHE Blue filter, boca CO₂ i kartuša za čišćenje nisu uključene u dostavu i trebale bi se naručiti zasebno
- suitable filters:- filter S-size, capacity 600 l at 20° dKH (40 404 001)- filter M-size, capacity 1500 l at 20° dKH (40 430 001)- filter L-size, capacity 2500 l at 20° dKH (40 412 001)- activated carbon filter, capacity 3000 l (40 547 001)- Ultrasafe filter, capacity 3000 l (40 575 002)- Magnesium + Zinc filter, capacity 400 l at 17° dGH (40 691 002)
- System requirements Apple iPhone with iOS 14.0 or higher System requirements Android smart phone with Android 10.0 or higher Mobile devices and GROHE Watersystems App*** are not included in delivery and have to be ordered separately via an authorised Apple store/store/iTunes or Google Play store.* The Bluetooth word mark and logos are registered trademarks owned by Bluetooth SIG, Inc. and any use of such marks by Grohe AG is under license. Other trademarks and trade names are those of their respective owners.** Apple, the Apple logo, iPod, iPod Touch, iPhone and iTunes are trademarks of Apple Inc., registered in the U.S. and other countries. Apple is not responsible for the function of this device or its compliance with safety and regulatory standards.*** Available for free via iTunes app or Google Play store.

31 323 DC2 GROHE BLUE PROFESSIONAL C-SPOUT KIT



REZERVNI DIJELOVI, kolovoza 2013 – now

- 1: Prsten za učvršćivanje (Br. narudžbe 07419000)
- 2: Kapica (Br. narudžbe 46581DC0)
- 3: Ručica (Br. narudžbe 46957DC0)
- 4: Kartuša (Br. narudžbe 46580000)
- 5: Upravljač protoka (Br. narudžbe 48343DC0)
- 6: Radna jedinica (Br. narudžbe 46958DC0)
- 7: Filter za prljavštinu (Br. narudžbe 47576000)
- 8: Potporna ploča (Br. narudžbe 05334000)
- 9: Sklop za učvršćivanje držača (Br. narudžbe 48384000)
- 10: Glava filtera (Br. narudžbe 64508001)
- 11: Hladnjak i karbonizator (Br. narudžbe 40554001)
- 12: Indikator tlaka (Br. narudžbe 46717000)
- 12.1: CO₂ adapter (Br. narudžbe 40962000)
- 13: Start paket CO₂ boca od 425 g (4 komada) (Br. narudžbe 40422000)*
- 14: CO₂ adapter (Br. narudžbe 40962000)*
- 15: Start paket CO₂ boca 2 kg (Br. narudžbe 40423000)*
- 16: Stakleni bokal (Br. narudžbe 40405000)*
- 17: Filter S veličina (Br. narudžbe 40404001)*
- 18: Filter M veličine (Br. narudžbe 40430001)*
- 19: Filter L veličine (Br. narudžbe 40412001)*
- 20: Filter od aktivnog ugljena (Br. narudžbe 40547001)*
- 21: Filter (Br. narudžbe 40575001)*
- 22: Magnezij+ filter (Br. narudžbe 40691001)*
- 23: Kartuša za pročišćavanje (Br. narudžbe 40434001)*
- 24: Adapter za čišćenje kartuše (Br. narudžbe 40694000)*
- 25: Set za produljenje (Br. narudžbe 40843000)*

* Izborni dodaci