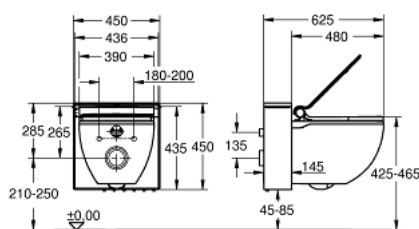


39 111 SH0 GROHE SENSIA IGS TOALETNI WC S POTPUNIM SUSTAVOM ZA PODŽBUKNE VODOKOTLIĆE, ZIDNI



OPIS PROIZVODA (1/2)

- Colour: alpine white
- GROHE Hygiene decalcification program, unique 70°C hot water cleaning for entire water system, automatic shower cleaning before and after every use
- GROHE DreamSpray technology:
- odvojen put vode s ženskim prskanjem
- aerated shower spray
- oscilirajući mlaz (automatsko pomicanje mlaza prema naprijed i natrag)
- pulsirajući mlaz za masažu
- prilagodba intenziteta mlaza
- automatsko ispiranje mlaznice prije i poslije sa čistom vodom
- warm water with adjustable temperature
- Dodatne funkcije:
- sušilo toplim zrakom s podešavanjem temperature
- odstranjivanje mirisa s filterom
- Duroplast sporospuštajuća WC daska s poklopcem
- push and turn seat control operation
- 4 programmable user profiles for remote controller
- prekidač za napajanje
- inside night lighting
- skrivena veza za vodoopskrbu i napajanje
- uključuje:
- touchscreen remote control with wall-mounted holder
- batteries for remote controller
- active carbon filter
- fixing and connecting material
- Odvodna cijev
- installation guide, manual
- kabel s utikačem na uređaju
- pressure 0.1 - 1.0 MPa (1 - 10 bar)
- nominal voltage 220-240 V AC 1400 W
- osnovna frekvencija 50-60 Hz
- tip zaštite IPX4

Pure Freude
an Wasser

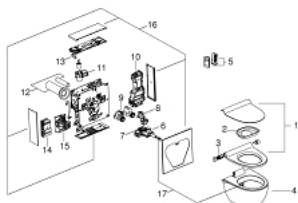


39 111 SH0 GROHE SENSIA IGS TOALETNI WC S POTPUNIM SUSTAVOM ZA PODŽBUKNE VODOKOTLIĆE, ZIDNI

OPIS PROIZVODA (2/2)

- complying with EN 1717/13077
- odobrenje CE
- SH0: alpine white ceramic, housing, front, seat and lid

39 111 SH0 GROHE SENSIA IGS TOALETNI WC S POTPUNIM SUSTAVOM ZA PODŽBUKNE VODOKOTLIĆE, ZIDNI



REZERVNI DIJELOVI, kolovoza 2018 – now

- 1: Daska za WC s poklopcem (Br. narudžbe 14913000)
- 2: Štitnik od prskanja (Br. narudžbe 14914000)
- 3: Kontrolna jedinica (Br. narudžbe 14916000)
- 4: Keramički WC (Br. narudžbe 14900000)
- 5: Daljinski upravljač (Br. narudžbe 14915000)
- 6: Tuš jedinica (Br. narudžbe 14904000)
- 7: Interface print (Br. narudžbe 14908000)
- 8: Dryer (Br. narudžbe 14905000)
- 9: Flush device (Br. narudžbe 14910000)
- 10: Boiler (Br. narudžbe 14902000)
- 11: Odour extraction (Br. narudžbe 14909000)
- 12: Ulazna cijev (Br. narudžbe 14917000)
- 13: LED-print (Br. narudžbe 14907000)
- 14: Elektronika (Br. narudžbe 14906000)
- 15: Pump (Br. narudžbe 14903000)
- 16: Panel set (Br. narudžbe 14911SH0)
- 17: Tuš (Br. narudžbe 14912000)